

# Staff Nurse Job Role Profile

## Job Profile

**Salary:** TBC, dependent on experience

**Location:** **ellenor** Hospice,  
Coldharbour Road,  
Gravesend, DA11 7HQ

**Responsible to:** Operational Lead

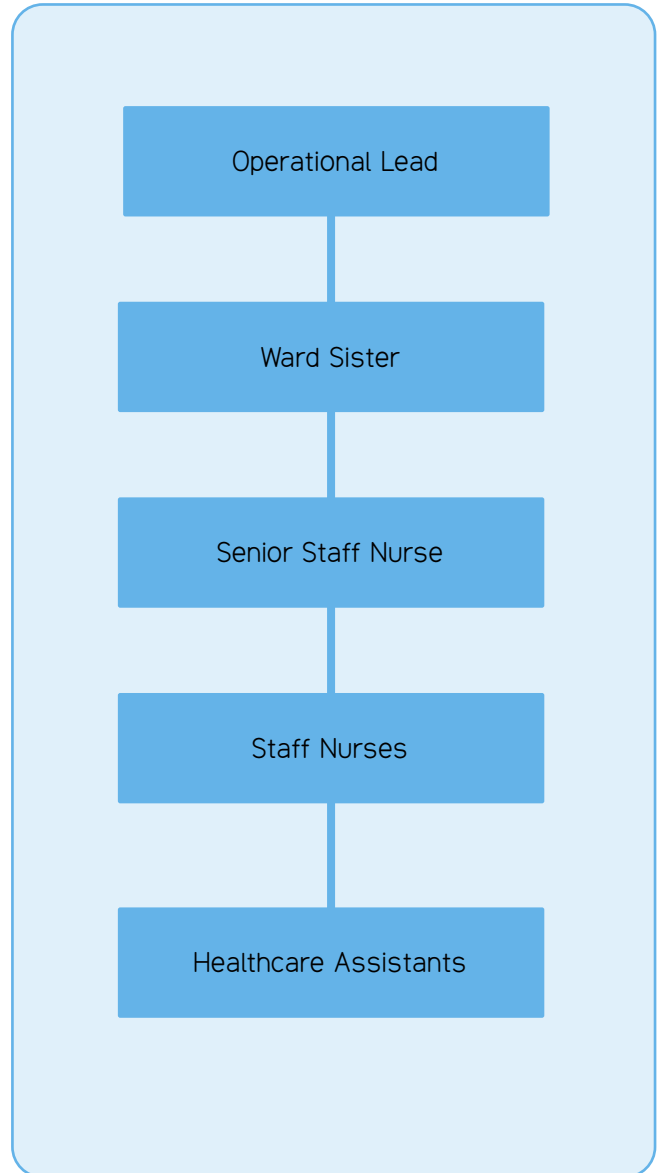
**Core Purpose:** To ensure the provision of high quality patient care and family support throughout the organisation.

## Job Summary

We are looking for registered nurses with a clinical background in palliative/cancer care or registered nurses who are looking to develop a career in palliative/cancer care.

You will be responsible for ensuring delivery of high-quality patient care and family support across the care directorate.

Working with the Operational Lead to forge successful relationships with all **ellenor** care directorate services and community providers to promote **ellenor** as the local lead for palliative care.



## Responsibilities

As a Staff Nurse you will have responsibility for:

- ensuring the highest possible standard of holistic care for patients with support for their families and those closest to them
- encouraging family participation in the care of the patient and, where appropriate, respecting individual and cultural choices as well as patient's wishes
- participating in the assessment of care needs, development, implementation and evaluation of programmes of care
- ensuring accurate evaluation of care and treatment provided with timely reporting of outcomes to the Medical and Nursing teams
- ensuring all care is documented clearly in the electronic patient notes and completed in line with mandatory legal requirements, in particular that it is accurate and up to date
- working effectively as part of an integrated team to ensure the highest standards of care and quality are delivered and maintained
- working alongside Healthcare Assistants and the medical team
- working within **ellenor** mission and philosophy at all times and to base care on evidence based practice
- liaising with all internal and external colleagues to ensure smooth communication of patient information
- working in partnership with the Primary Health and social care professionals and the Hospice multi-professional team, in meeting the patient's palliative care needs
- undertaking any other duties considered to fall within the scope of the position of Staff Nurse, as directed by the Ward Sister/Operational Lead for Inpatient Ward.

## Requirements

The Staff Nurse will:

- be a registered nurse with up to date registration and revalidation
- have evidence of recent continuing professional development
- be educated to, or working towards, a degree level or equivalent
- have flexible approach to working hours, times and days of the week (able to work night duty on a rota basis if required)
- have a mentorship/supervisors qualification
- be willing to undertake further study/attend inhouse training.
- report to the Ward Sister and Operational Lead for IPU.

## Information

The post holder will be provided with access to office space, IT facilities and administrative support.

1. Ability to continue NHS Pension.
2. **ellenor** provides a range of services and the post will work across all of our nursing, therapy and wellbeing services.
3. Clinical Supervision/coaching/mentoring dependant on needs.