

# Play Therapist Job Role Profile

## Job Profile

**Salary:** Starting at £27,825 to £31,318 pro rata 0.32 FTE.

**Location:** **ellenor** Hospice, Coldharbour Road, Gravesend, DA11 7HQ

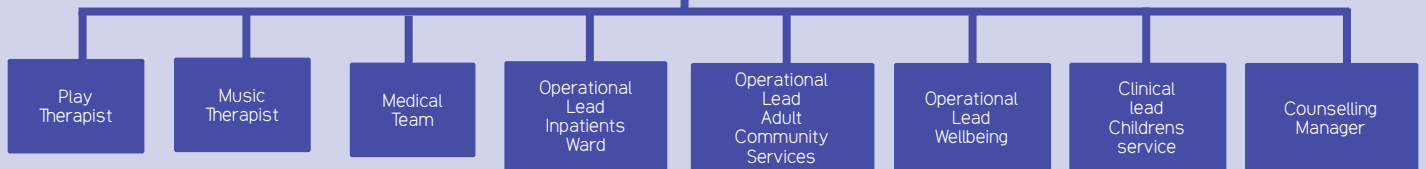
**Responsible to:** Director of Care

**Core Purpose:** To ensure the delivery of high-quality specialist therapeutic support to children and their families under the care of ellenor including bereaved children, children with life limiting conditions and oncology needs and children of adult patients.

## Job Summary

- To assess patients for suitability for therapy and undertake direct work using specialist therapeutic skills with patients and carers with highly complex emotional and psychosocial needs.
- To provide therapeutic services to patients under the care of ellenor. This will include Face to Face therapy, therapy via Zoom, and in some circumstances will include visiting children in their school.
- Work in conjunction with other professionals both within ellenor and external to ensure there is an appropriate plan of support in place for each child.

Director of Care



## Responsibilities

The Play Therapist will have responsibility for:

- To employ highly developed clinical skills and specialist Play/Art Therapy techniques when establishing therapeutic relationships with referred clients.
- To adapt practice to meet individual client's circumstances, including due regard for cultural differences.
- To be responsible for, and demonstrate both organisational and clinical skills in, the management of own caseload.
- To implement differential intervention programmes based on evidence from assessment.
- To ensure that clients and carers are involved in the planning of their care wherever possible.
- To ensure a good level of clinical effectiveness by use of evidence-based practice and outcome measures.
- To promote reflection on practice with peers and mentors and identify own strengths and development needs.
- To be involved in the training and education of staff at the ellenor and external organisations as appropriate, on therapeutic and bereavement issues.
- To support the Childrens Service with services of remembrance, bereavement days for children and other family days.

## Requirements

The Play Therapist will need:

- Ma/ MSc in Play Therapy
- Registered as a Play Therapist with British Association for Play Therapist BAPT or PTUK
- Previous experience of delivering Play Therapy sessions to children ideally within a family service setting
- Experience of working with bereaved children and those with complex needs
- Show understanding of other therapeutic disciplines (e.g. physiotherapy, Speech and language therapy or Music Therapy)

## Information

The post holder will be provided with access to office space, IT facilities and secretarial support.

1. Ability to continue NHS Pension.
2. **ellenor** provides a range of services and the post will work across all of our nursing, therapy and wellbeing services.
3. Clinical Supervision/coaching/mentoring dependant on needs.