

Specialty Doctor Job Role Profile

Job Profile

- Salary:** Specialty Doctor scale
- Location:** **ellenor** Hospice, Coldharbour Road, Gravesend, DA11 7HQ
- Responsible to:** Director of Care
- Core Purpose:** To provide excellent medical care to those living with or affected by life-limiting illness.

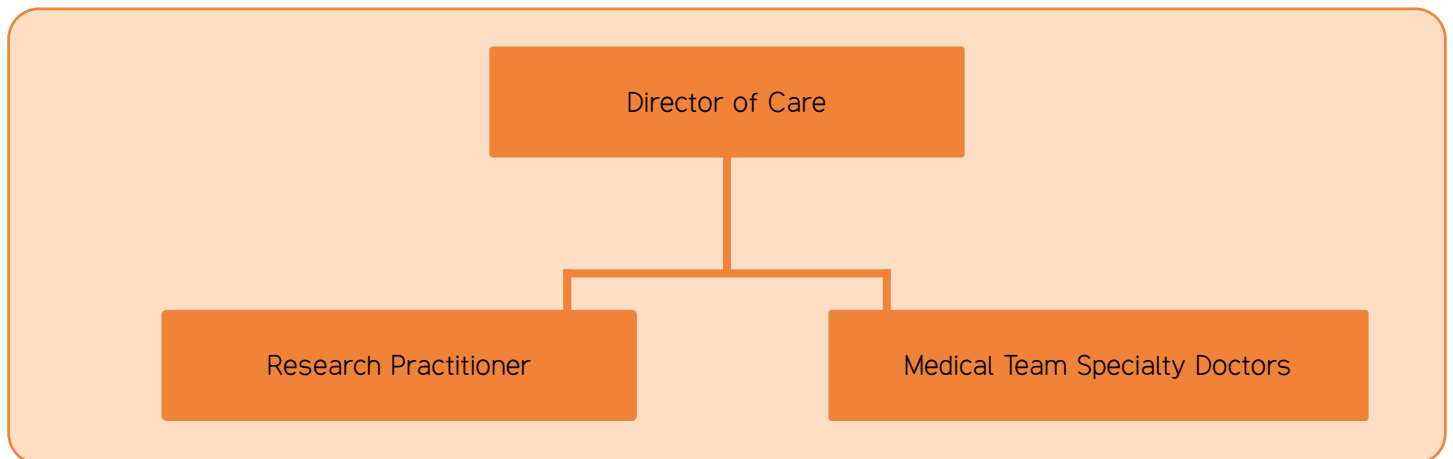
Job Summary

We are looking for experienced doctors capable of delivering high quality patient care to patient both in our Inpatient Ward and across our Adult Community Services.

You must have full GMC registration, 4 years full time postgraduate training including at least 2 years in a relevant speciality.

Involvement in teaching and audit/research is required, along with participation in the on call and weekend rota.

Reporting to our Director of Care, you will also work in conjunction with Supportive Care UK who provide our Consultant input.



Responsibilities

As a Specialty Doctor you will have responsibility for:

- Daily Medical Management of patients on the Inpatient Ward
- To provide continuity of medical care to the adult patients under care of **ellenor** across the Inpatient Ward, Community, Outpatient and Living Well Setting
- To participate in the Inpatient Ward and community multi-disciplinary meetings
- Undertaking community home visits
- Supporting the provision of Outpatient clinics
- To provide a first on call service for the Inpatient Ward.

Requirements

The Specialty Doctor will:

- Be fully registered with the GMC
- Qualified Medical Practitioner MBBS or equivalent
- Minimum 4 years full time equivalent post qualification experience
- 2 years experience in relevant speciality
- Report to the Director of Care.

Indicative Timetable of a full time post

Scheduling of the sessions will be by mutual agreement between the post holder and the Director of Care.

Information

The post holder will be provided with access to office space, IT facilities and secretarial support.

1. Medical Indemnity is required and can be arranged by the Hospice via the Medical and Dental Defence Union of Scotland.
2. **ellenor** provides a range of services and the post with work across all of our adult services.
3. Study leave is by mutual agreement up to a maximum of up to 30 days over a 3 year period pro-rata.
4. Supervision via Supportive Care UK.